



# NEWSLETTER

## JANUARY 2023

### Contents

#### Recent events

**Lewes IHBC Reconnection Day** Saturday 9th July 2022.  
Pg. 3.

**Hastings Study Visit Day**  
June 2022. Pg. 4.

**Regency Town House Visit**  
Friday 30th September 2022.  
Pg. 5.



#### Future events

**IHBC Day School and AGM - Weald and Downland**  
Friday 24th March  
2023. Pg. 7.

**St John's Seminary - Public Exhibition** 7th - 10th March  
2023. Pg. 8

**Hortons Chapel, Epsom (TBC)** April/May 2023.



### Word from our Chair.

Happy New Year to all our members, and here's trusting 2023 will be a good year for all. Like many of us I fear being so busy makes it hard to keep up with current affairs, so the Christmas break has been ideal for catching up on IHBC News. 25 years in existence is a huge cause for Celebration; see page 15 of the magazine for our very own Lone in Mary Kings article Launching the IHBC.

Since our last newsletter in June 2022, we have had quite a few local events take place, including the Branch Reconnection day in Lewes, which was a fabulous success, and which I for one would love to repeat. I urge members to make the most of our events, as they inspire, inform and encourage me in my work with heritage. I recall one IHBC attendee, a Civil Engineer, lamenting the domination of design by highway matters to the detriment of place, an opinion many of us share but rarely hear from in a different discipline. When members get together it really helps us in the fight to champion our cause.

We also have an updated Business Plan, [https://ihbc.org.uk/branches/s\\_east/index.html](https://ihbc.org.uk/branches/s_east/index.html), which reviews our work for the branch and focuses on expanding our network for new and old members and address the geographic challenges of our region.

The IHBC South East Branch covers East and West Sussex, Kent and Surrey which has its challenges.

Finally, I'd like to thank all my Committee members, with particular reference to Tanya Szendeffy, who has just stepped down as Sussex Rep, remaining on the committee. In the short time I have been acquainted with Tanya, I have been impressed with the time she has dedicated to us and I'm deeply grateful.

Happy New Year to you all!

### **IHBC Christmas Meal at Rooster's Kitchen, Dorking**

---

This had a great turnout and was a thoroughly enjoyable event to kick off the festivities on 1st December, even joined by director Sean O Riley. I for one miss the Summer School organising as we all used to see a lot more of Sean then!

I'd like to report that the event was very serious and had a superb high level speaker but it didn't! A thoroughly delightful time was had by all, and it was lovely to see Debbie Brooks among others who made it out. Thank you to all who attended, I know it was a very long old journey for some, Dorking was chosen as a midway point, but the logistics are still hard with our region!



## IHBC Branch Reconnection Day. 9th July 2022



This was an outstanding success, a great blend of formal and informal with a superb lunch, the first time many of us had met in person on such a relaxed and informal basis since the times of covid.

The day kicked off with a brief introduction to the South East Branch's doings since our AGM in Hastings followed by Richard Morrice's Keynote Address on the 'Antics of a Building Inspector' which was highly entertaining and informative, covering his time originally listing buildings in the 1980's and beyond.

This was followed by a short Q and A session with Committee members on what we want to see our branch doing in the future.

There was also a great selection of afternoon walks and tours including a tour of Harveys Brewery, a tour of Lewes to identify recurring patterns by local historian Marcus Taylor (tours had been planned for the aborted 2020/21 due to Covid so it was good to finally meet in person!) and finally, an incredible chance to see work being undertaken repairing a selection of the scheduled curtain wall at Lewes Castle, which had suffered a catastrophic collapse.

The day finished off with a workshop run by Tanya Szendeffy looking at the patterns people saw in the walk around Lewes, this work has subsequently been used by the council.





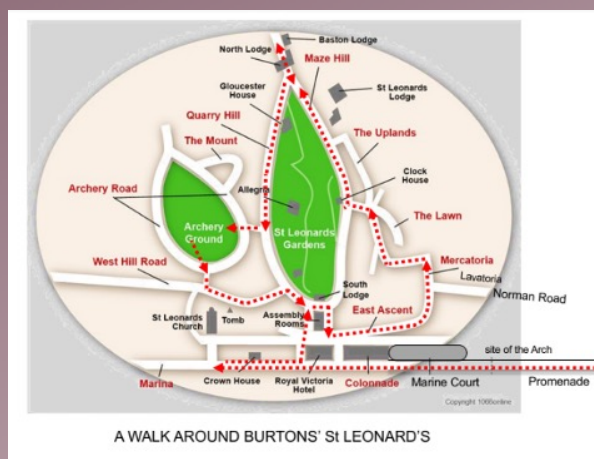


Final workshop was held by Tanya Szendeffy with Hannah Smart (shown above) from the Urban Design Group holding up her own take on what makes Lewes Lewes. What a fabulous drawing.

## A study visit to Hastings: Is St. Leonards the 15 minute place to be? June 2022.

This joint Urban Design Group and IHBC event was led by Tanya Szendeffy and Robert Loxford.

An excellent event, rather windy but very informative investigative approach to the development of the town, including a walk (inset below) looking at the context of Listed buildings and their relationship in the urban landscape. This was followed by a workshop looking at the creation of a Design Code following the National Model Design Code guidance. Lots of differing opinions all round!



## Brighton Regency Town House. September 30th 2022.

Our guide, Nick Tyson, curator of Regency Town House, addressed us on the Green within Brunswick Square and told us of the history of the development of Brighton from its origins as a fishing village through to the Old Town then the New Town. Kemptown grew to the East and Brunswick to the West. The success of Brighton's bountiful developments was due to the bathing and drinking of the 'health' waters. Georgian society was rigorous and regimented, but with the Prince of Wales in Brighton, the society was more relaxed and enjoyed much social exchange. By the end of the 18th century the first hotels and other visitor accommodation was arriving.

Brighton fast became expensive, so the Architect Busby designed the Regency new town in Hove where there were cheaper taxes. Busby didn't have the money to create the whole estate so Brunswick Square was built by several speculative developers. At first sight the Square appears as one cohesive terrace of townhouses, but on closer inspection, we learnt there were many devices for altering the width of properties and for cheating perspectives following the line of the sloping ground down to the sea shore. The other reason for the huge impact the square makes when viewing from the beach end is that Busby was prescriptive on colours for the Roman cement render and for the timber work, materials and plumbed in gas from the outset.



The property is listed at GI as it retains so many original features, hence the reason to run conservation workshops and use the House as a Museum. Once inside the House, Nick explained the paint effects and how the analysis was done. Conceits were used to make timber appear like stone and cheap timber to look like expensive wood grain for doors, windows and skirtings. Lime plaster is used internally, and where it has needed repair, the old is taken off the walls, recycled and then replaced back onto the wall. It was fascinating to learn that bow windows were designed to allow maximum light in plus a sea view. The earlier houses with crown glass windows used a counter-weighted system of 'Antwerp' shutters against the storms. The later windows were made from heavier weight cylinder glass and arranged as 1/1 sash windows.





We were treated to visit the basement of nearby No. 10 Brunswick Square. Again the original features survive. This gem really helped you understand how the servants worked to service all aspects of the House above. The basement consisted of one long corridor with rooms off to include the wine cellar, Butler's pantry, Housekeepers' room, kitchen, dairy, scullery and a rear yard with a well in the centre. The women slept in cots in tiers in an alcove in the servants Hall. There was also a route extending under the stables and coach house at the rear of the House, providing a direct route for the gentlemen to ride out to hunt on the Downs whilst they stayed in Brighton.

After lunch our walking tour of the Brunswick Town Conservation Area was reduced due to quite inclement weather. We went to see where Busby lived nearby and learned further about how the area developed. Nick carefully explained why and how so much of the architectural detailing came about. The sheer volume of information and stories Nick relayed to us made it an interesting and not to be forgotten CPD day.



## UPCOMING IHBC CPD EVENTS

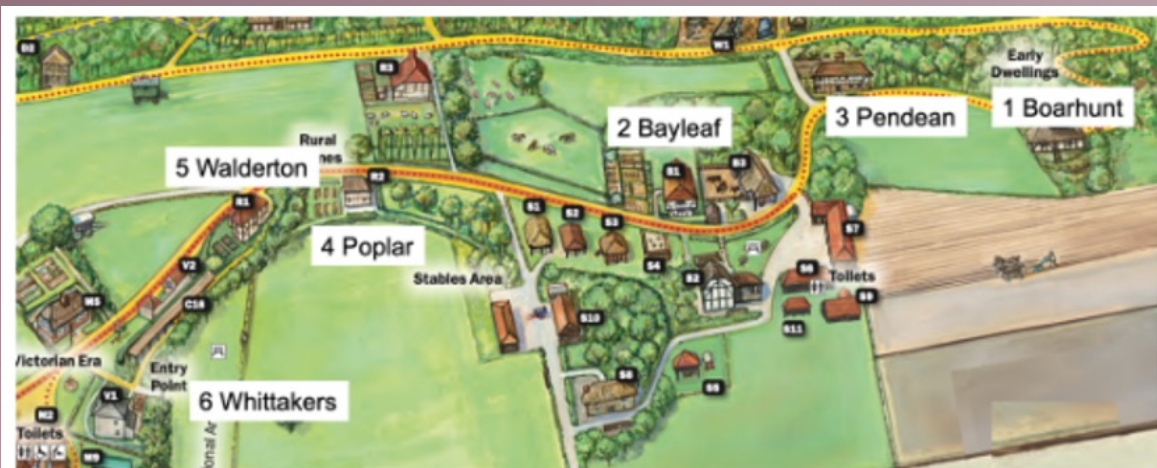
### **2023 IHBC Day School and AGM - Weald and Downland Living Museum, Chichester. - Friday 24th March 2023**

Following the highly successful Hastings event, we are pleased to announce the date for our 2023 Day School at the Weald and Downland, save the date in your diary!



The purpose of the day will be to help IHBC members gain greater understanding of the history of vernacular buildings in the south-east. Specific outcomes outlined at this point are:

- 1) Members will have a broad understanding of the characteristics of vernacular building across the south-east.
- 2) Members will be able to understand the typological and regional varieties of vernacular buildings in the south-east in line with the latest up to date research.
- 3) Members will be able to recognise when and how to record a building in line with national policy and guidance.
- 4) Members will gain on site experience in how to record and interpret vernacular buildings.
- 5) Aim for members to gain a good understanding of traditional repairs to vernacular buildings .



The exact format and talk titles are still under discussion but those present include well known and highly respected leaders in their field and will include:

Kevin Stubbs (Weald and Downland Museum)

Jeremy Clarke (Wealden Building Study Group)

Martin Higgins (Domestic Building Research Group)

Joe Thompson (Sussex Oak and Iron)

David and Barbara Martin

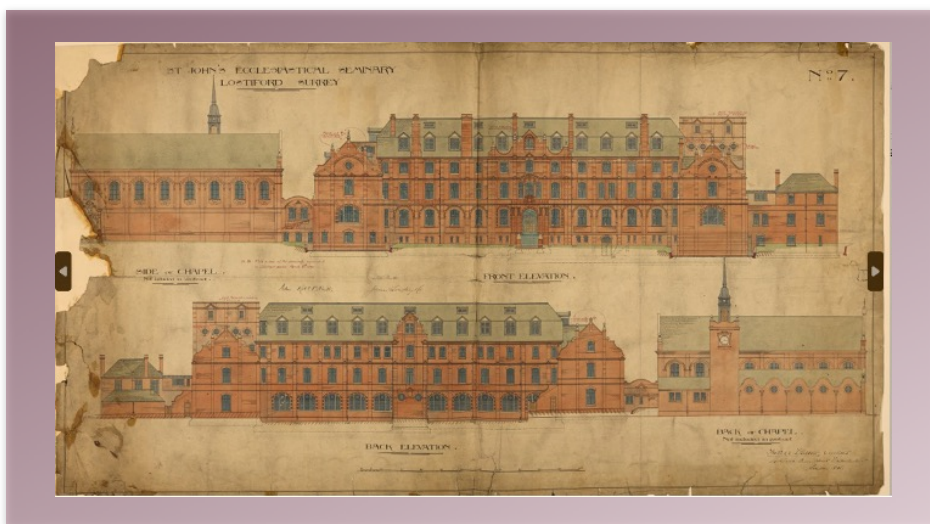
Stephen Gray – IHBC Committee and tour lead

Alan Dickenson – IHBC Committee and vernacular expert

The day will start with registration and coffee at 9:30 followed by Chairs welcome and talks with our AGM just before lunch. Over lunch the usual networking and food whilst the afternoon will allow time for tours around the museum accompanied by tour guides. Eventbrite tickets soon to be announced.

## **St John's Seminary, Wonersh, Surrey. - Public Exhibition - 7th - 10th March 2023 12 - 7 pm. Saturday 11th March 2 - 3pm**

---



Catholic Seminary's play an important part in the catholic community, so it is with great sadness that one of the last in the country has recently closed. We have the opportunity to visit St John's prior to development, designed by Frederick Walters, a prominent Victorian Church architect over a lunch time talk followed by a tour around the Seminary itself. Conversion of Listed buildings and upgrading them to be more energy efficient is a difficult task. Plans are underway to achieve an EPC rating of B on the main asset with new development being carbon neutral. Will this adversely affect the heritage asset. Come and find out!



IHBC Jo Saady will be in attendance at the exhibition at St Johns Seminary Womersley, Guildford GU5 0QX during that week and is willing to give any IHBC members a personal tour of the building whilst there will be the chance to view the proposals to the Grade 2 building on display. Contact [info@ecotecture.co.uk](mailto:info@ecotecture.co.uk) for more details.



**CPD event providing 30 hours CPD plus** - Event provided by a member of IHBC SE branch member.

---



### **Building Conservation Summer School 2023.**

Sunday 18th June 2023. Royal Architectural University, GL7 6JS

<https://buytickets.at/buildingconservationsummerschool/719798>