

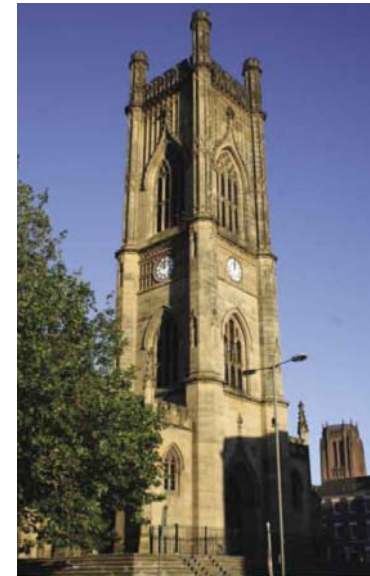
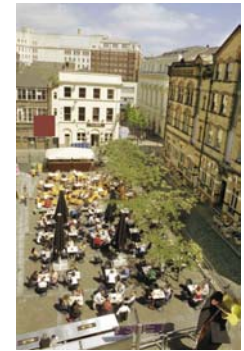
Ropewalks

This unique area of the City Centre, characterised by the concentration of 19th century warehouses and merchants' houses. Much of the street pattern and built fabric is the same today as it was 200 years ago. The long, narrow streets were at one time used to bind rope, and are still the defining characteristic of the area.

Since the early 1990s, RopeWalks has developed as a centre for Liverpool's night-time economy and creative industries. Many businesses operating within RopeWalks are drawn from media, publishing, design and communications sectors.

RopeWalks has established itself as part of the city centre living phenomena. Many historic buildings have now been refurbished as apartments and there have been significant amounts of new build on gap sites in the area. An active residential community is now established in the area.

This historic but declining quarter of central Liverpool has been dramatically revived by a four year programme completed in 2002 where £15m funds from several sources have been used to replace pavements, road surfaces, lighting and street furniture and provide new squares and links.



***IHBC Summer School
Saturday 16th June 2007
Tour***

The Ropewalks District

Sponsored by



Paul Butler Associates





Ropewalks

Guided walk to explore the Ropewalks area of early merchants' houses and warehouse, which includes part of Liverpool's World Heritage Site. The area grew after the opening of Old Dock in 1715, fell into a spiral of decline with the closure of the historic docks in the late 20th century, but is now in the midst of an exciting urban regeneration programme, with challenging issues of design, scale and ownership. Visit Alma de Cuba at St Peter's Church, Colin's Bridewell and the Bluecoat Chambers

Institute of Historic Building Conservation Summer School June 2007

Proposed Itinerary

- 2.00pm** Meet at Medical Institute
Walk via Hope Street, Anglican Cathedral ,
Canning Street
- 2.15pm** Chinese Arch, Former George Street ,
Congregational Church (The Blackie),
Nelson Street, Berry Street, St Lukes,
Bold Street
- 2.30pm** Colquit Street, Thomas Parr House / Warehouse,
Seel Street, Visit Alma De Cuba (former St Peters)
- 2.45pm** Fact/Tea Factory/Wood Street
- 3.15pm** Bold Street / 14-16 Bold Street,
Concert Square, Lyceum,
- 3.30pm** Bluecoat Chambers
- 4.15pm** Hanover Street, No 12 Hanover Street
Wolstenholme Square, Duke Street,
Former Union News Room , Henry Street,
Campbell Square, Bridewell, Argyle Street,
Warehouses
- 5.00pm** Finish and return to Adelphi Hotel

Principal Guide John Stonard (CABE)